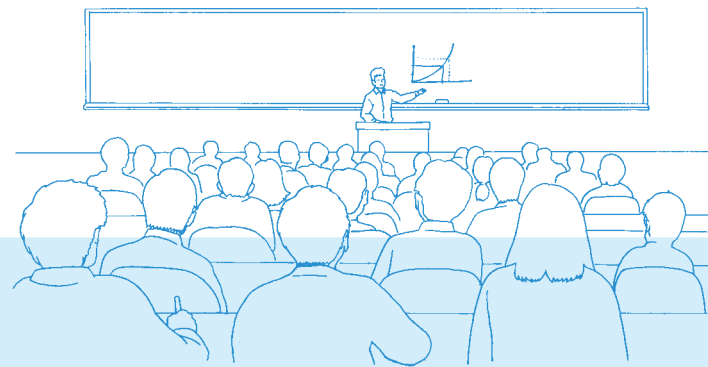




■ Yobi-gakko (Yobiko) and Its Role in Japanese Education

Sundai Responds to the Diverse Needs of Preparatory Students in Line with Changes in the Entrance Exam System and Educational Environment



(Sundai has an outstanding record with exams to enter the highest-level universities)

■ Sundai Yobi-gakko Class for High-School Graduates

Target **High-School Graduates**

Based on the philosophy of Aijo-kyoiku, lessons are designed to foster the ability of students to understand the essence of studies rather than merely how to solve entrance examination questions. The class is highly regarded, and students have a high pass rate in entrance exams for top national and private universities.



Support provided based on an analysis of entrance examination problems at all levels

■ Nation-wide Mock Examination Center

Targeting senior high school graduates and junior and senior high school students, the center analyzes university entrance examination questions at all levels and holds mock entrance exams throughout Japan. Exam contents as well as score analysis are highly regarded by students and teachers alike.

Gifted education that goes beyond taking exams

■ Sundai Seminar for Gifted Students

This special course for students seeking to enter the International Mathematical Olympiad (IMO) was established to have students escape the trappings of "math as an exam subject" to learn about math as a disciple in a broad, deep and unrestricted manner. The outcome of Sundai's emphasis on nurturing the power to "create" as well as solve mathematical problems is evident in its record of producing the greatest number of IMO medalists in Japan since 1994.

■ Sundai Yobi-gakko Frontier Class for Senior High School Students

Target **Senior High School Students**

This class supports current first- to third-grade senior high school students aspiring to gain admission to top universities. Geared toward individual academic abilities, lessons enable students to master basic learning and the practical skills necessary to pass entrance exams. The class also provides valuable information and advice.



■ Sundai Senior High School Club

Target **Senior High School Students**

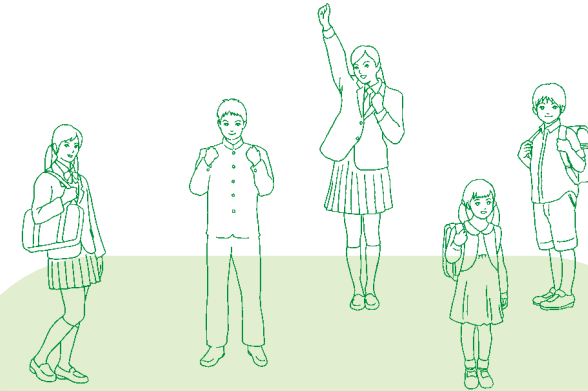
This club is for students seeking to enter Japan's top-level national and private universities. It fosters the academic ability of current senior high school students by combining the two pillars of lessons by professional teachers focusing on the "understanding of principles," which is Sundai's tradition, and "adaptive learning" using artificial intelligence teaching materials to compose study curriculums responding to individual academic ability conditions.



■ Emile The Preparatory School for the University of Tokyo Entrance Exam

Target **Junior High School Students** **Senior High School Students**

At this prep school for students aspiring to enter the University of Tokyo, professional Sundai instructors with a good knowledge of University of Tokyo entrance exams provide guidance to small groups of students. Rather than the learning approach of loosely arming oneself with superficially gained knowledge and getting through exams through rote memorization, Emile focuses on the use of preparatory studies as a vehicle for learning about what it means to think on one's own and make judgments, thereby guiding students toward success in the exams.



(Cultivating firm learning capability from an early stage)

■ Sundai Junior High School Club

Target **Elementary School Students** **Junior High School Students**

This class is for elementary and junior high school students aspiring to enter prestigious junior and senior high schools or, in the future, highly competitive medical schools or top-notch universities in Japan or overseas. Using original texts, experienced instructors conduct high-quality lessons designed to foster logical thinking and flexible minds.



■ Sundai-Hamagakuen Preparatory School Metropolitan Tokyo Region

Target **Elementary School Students**

Sundai jointly established this prep school with Hamagakuen, the leading preparatory school in the Kansai region. Bringing together the educational resources and know-how of Sundai and Hamagakuen, the school offers effective guidance to students aspiring to enter top private junior high schools in the metropolitan Tokyo region.



■ Sundai-Hamagakuen Preparatory School Kansai Region

Target **Elementary School Students** **Junior High School Students**

This prep school fuses the instructional knowhow of Sundai in university exam-taking and Hamagakuen in private junior high school exam-taking, both of which are backed by overwhelmingly-high student pass records. Through careful instruction rooted in principles given in an integrated educational framework that spans elementary and junior high school, this school helps students understand the "essence" and cultivates learning capability that will serve as an asset for their future as well.



(Meeting the educational needs of each and every student)

■ Sundai Individual Education Center

Target **Elementary School Students** **Junior High School Students**

Senior High School Students **High-School Graduates**

In accordance with its motto of "If there are 100 students, there are 100 teaching methods," this center provides one-on-one lessons for children from elementary to senior high school age. The curriculum is tailored to the individual's personality and supports students in the achievement of their academic goals.



The shape of one-on-one instruction

Commuting-based one-on-one instruction
Home tutors
Online instruction
e (visual) study



Leveraging the experience and expertise of Sundai in addressing local needs

■ Sundai Elementary and Junior High School Club (Sapporo)

This tutoring school for elementary and junior high school students provides guidance for junior and senior high school studies and entrance exams. Through careful educational counseling and study planning, it helps students gain admission to prestigious schools.

